

THE PAKEMAN PRESS



**Pakeman
Primary
School**

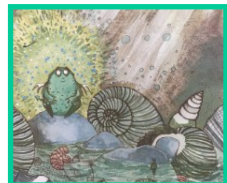
Thank you for taking the time to read this weekly newsletter. We hope you will find its contents useful.

Issue 5 SpringTerm 2025

Friday 14th February 

Woodland Habitats

Year 1 and 2 children have made some fantastic woodland habitats this week. Hopefully, these will inspire them to write new setting descriptions relating to their current story, *The Bog Baby*.



DATES FOR YOUR DIARY

Half Term

Mon 17th Feb - Fri 21st Feb



End of Spring Term

Friday 4th April
(Finish 1.30pm)

Start of Summer Term

Tues 22nd April 2025



Valentine's Day at Playcentre

Children at Playcentre had a great time being creative this week. They made some super Valentine's cards for their loved ones.



SUPERSTARS




Elm	Iqra
Pine	Jazmine
Cherry	Roukia
Holly	Ranya
Maple	Deandre
Willow	Emily
Palm	Elise
Banyan	Peace
Olive	Nassima
Cedar	Maria
Mahogany	Hadi
Eucalyptus	Aminah
Sequoia	Olivia

Well done Superstars



Attendance and Punctuality

Year Group	Best Attendance	Most Improved	Best Punctuality
EYFS & KS1	Under 96% 	Under 96%	Elm Class Cherry Class
KS2	Mahogany Class	Under 96%	Mahogany Class

Attendance Matters



GREEN = 97% and above

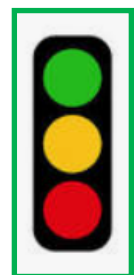
Good attendance and gives your child the best chances of achieving their full potential.

AMBER = 95% to 96%

Attendance has fallen below the national average and requires improvement.

RED = 91-94%

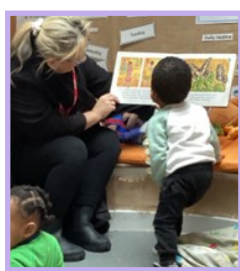
Attendance has reached levels which puts your child at significant risk of under-achievement.



A Busy Term In Elm Class

In Elm, the focus for the past few weeks has been favourite stories. This week, they have been recapping all the stories used. Children explored ways to care for each other and babies. They also did lots of work learning prepositions through play. Children focused on a range of vocabulary, such as behind, under, over, in and through.

Elm class have also been busy reciting some favourite stories such as *Going On A Bear Hunt* and *Where's Spot?* as well as singing action rhymes. These include *Wind The Bobbin Up* and *Stand Up/Sit Down!* Everyone looks like they've been having so much fun.



MONTHLY SEND Coffee Morning

Our next MONTHLY SEND Coffee Morning with Natalie (CFSW) and Ashleigh from the Bridge School will be discussing Social Stories and how to use them at home to support your daily routine.



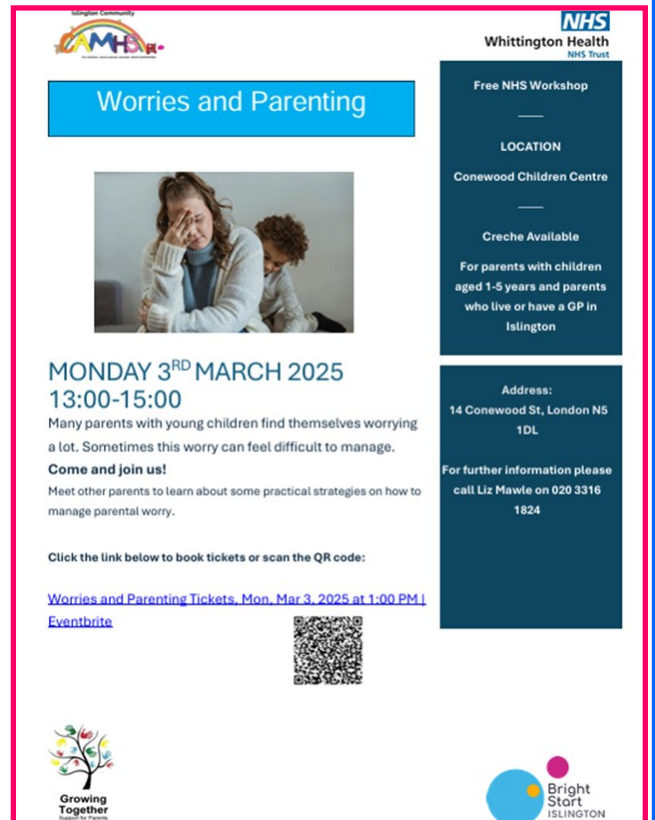
MONTHLY MONDAY SEND
COFFEE MORNINGS

MONDAY 3RD MARCH 2025
9:15AM IN THE LAB

Join us for a supportive session with Ashleigh from the Bridge school who will be discussing:

- Strategies to manage transitions at home
- Using Social Stories to support daily routine

Icons illustrating daily routines: wash face, dry, brush teeth, go upstairs.



Worries and Parenting

MONDAY 3RD MARCH 2025
13:00-15:00

Many parents with young children find themselves worrying a lot. Sometimes this worry can feel difficult to manage. **Come and join us!** Meet other parents to learn about some practical strategies on how to manage parental worry.

Click the link below to book tickets or scan the QR code:
[Worries and Parenting Tickets, Mon, Mar 3, 2025 at 1:00 PM | Eventbrite](#)

Address: 14 Conewood St, London N5 1DL
For further information please call Liz Mawle on 020 3316 1824

Logos: CAMHS, NHS Whittington Health NHS Trust, Growing Together, Bright Start ISLINGTON



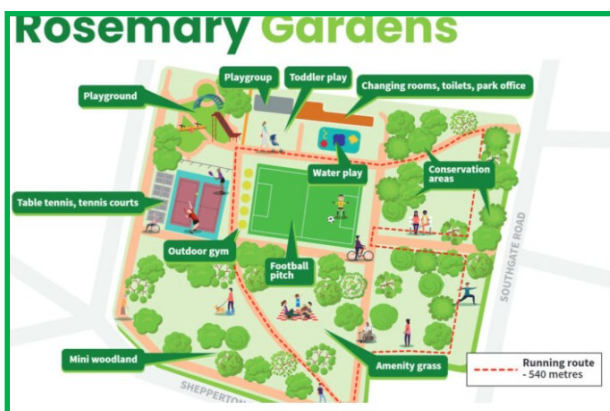
Islington Community
CAMHS
For children, young people, parents, carers and families

Islington Parks

It's half term next week. Why not head out into nature with your little one for a walk in one of our lovely Islington Parks.

Caledonian Park, Highbury Fields, King Square Gardens, Paradise Park, Rosemary Gardens, and Tufnell Park Playing Fields all have circular [walking routes](#) and running markers showing the distance you have covered. New River Walk and Parkland Walk are also both beautiful walkways you can take to explore Islington's natural environment. Have fun!

[Local Walking Routes](#)

Rosemary Gardens

Map showing various facilities: Playground, Playgroup, Toddler play, Changing rooms, toilets, park office, Table tennis, tennis courts, Outdoor gym, Football pitch, Water play, Conservation areas, Mini woodland, Amenity grass. Running route - 540 metres.



King Square Gardens

Map showing various facilities: President's House, Nature-education area, Play area, Community garden, Water play, Toilets and park keeper's office, Word garden. Running route - 450 metres.

World Book Day - £1 Book Token

Use your World Book Day £1 token to get a brilliant read for free between
13th February and 23rd March

How to use your £1 book token:

- First, check your child's school bag!
- [Browse £1 book selection](#)
- Go to The Works on Holloway Road or another participating [shop](#)
- Swap your £1 book token for a free book

Follow the link to the World Book Day website to explore fantastic resources linked to the £1 books, including a fun dressing-up pack and information sheets. You can also watch videos from our authors and illustrators as they share their top book picks, favourite reading spots, and more! <https://www.worldbookday.com/books-and-tokens/books/>

World Book Day's £1 books tokens can be used to get any of the £1 books in the link for free, or used for a £1 discount off any book.

World Book Day gives children a chance to benefit from the life-changing superpower of reading. It's all about encouraging children to read and to find the fun it brings.

Read with your child at Pakeman this World Book Day!

As part of Pakeman World Book Day celebrations, we would like to invite you to come to school to read with your child.



Years 1/2, 3/4 and 5/6 – Thursday 6th March

Early Years (2+, Nursery and Reception) – Friday 7th March

Please arrive from 8:45am and stay until 9:20am. In class, you will read a book with your child during soft start and then we will complete a World Book Day activity as a class.

You can also wear a costume or a clue to show what kind of books you like to read.

Let's all have fun dressing up and reading our way!



Keep the date free!